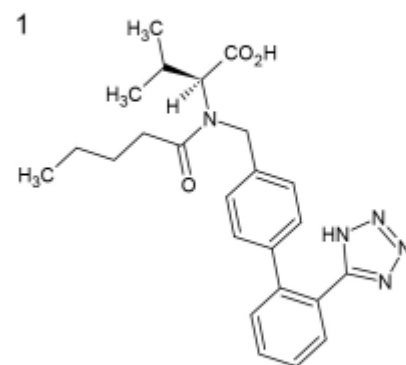
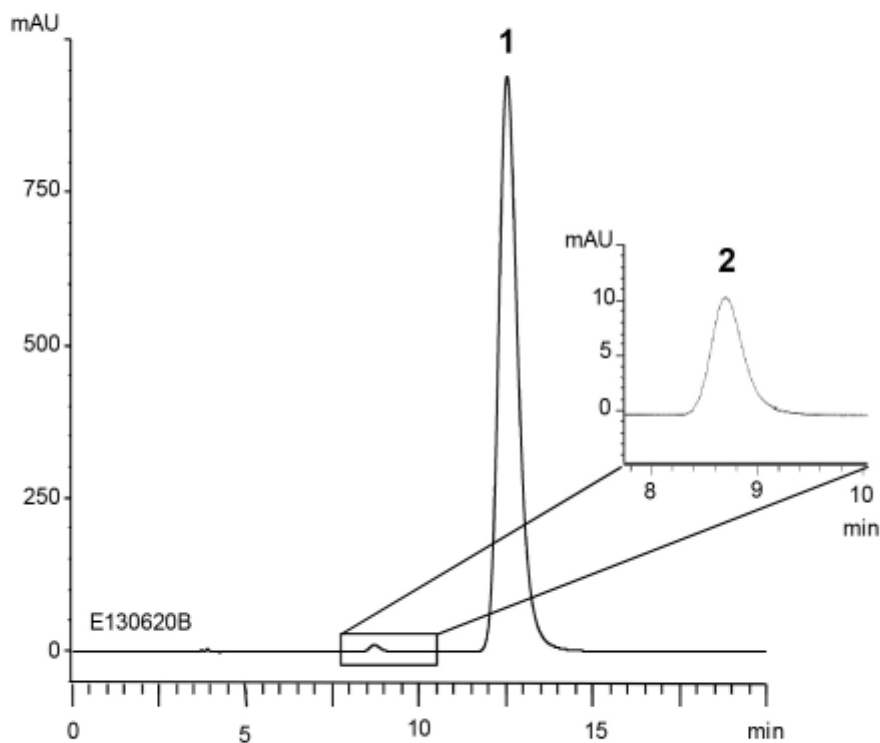
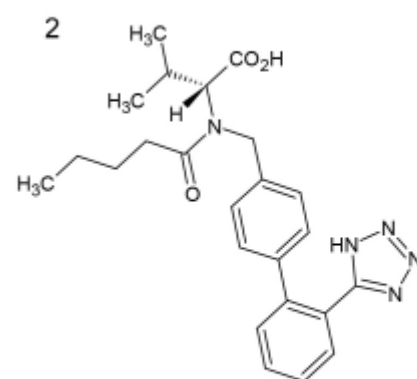


Test solution\*  
(1.0 mg/mL Valsartan)



Valsartan



Valsartan enantiomer  
(Valsartan related compound A)

Column : YMC CHIRAL Cellulose-C (5  $\mu$ m)  
250 X 4.6 mm I.D.  
Eluent : *n*-hexane/2-propanol/trifluoroacetic acid (85/15/0.1)  
Flow rate : 0.8 mL/min  
Temperature : 25°C  
Detection : UV at 230 nm  
Injection : 10  $\mu$ L

(The United States Pharmacopeia 34th; Related compounds)

\* Test solution was prepared from Valsartan supplied as a reagent for laboratory use.