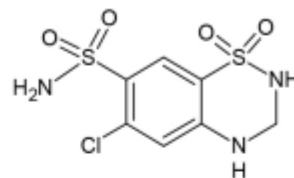
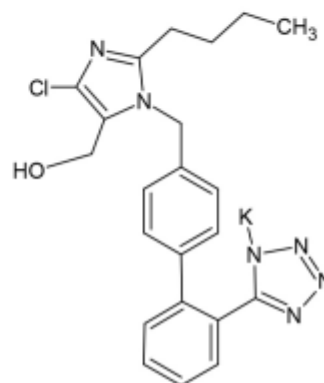


1

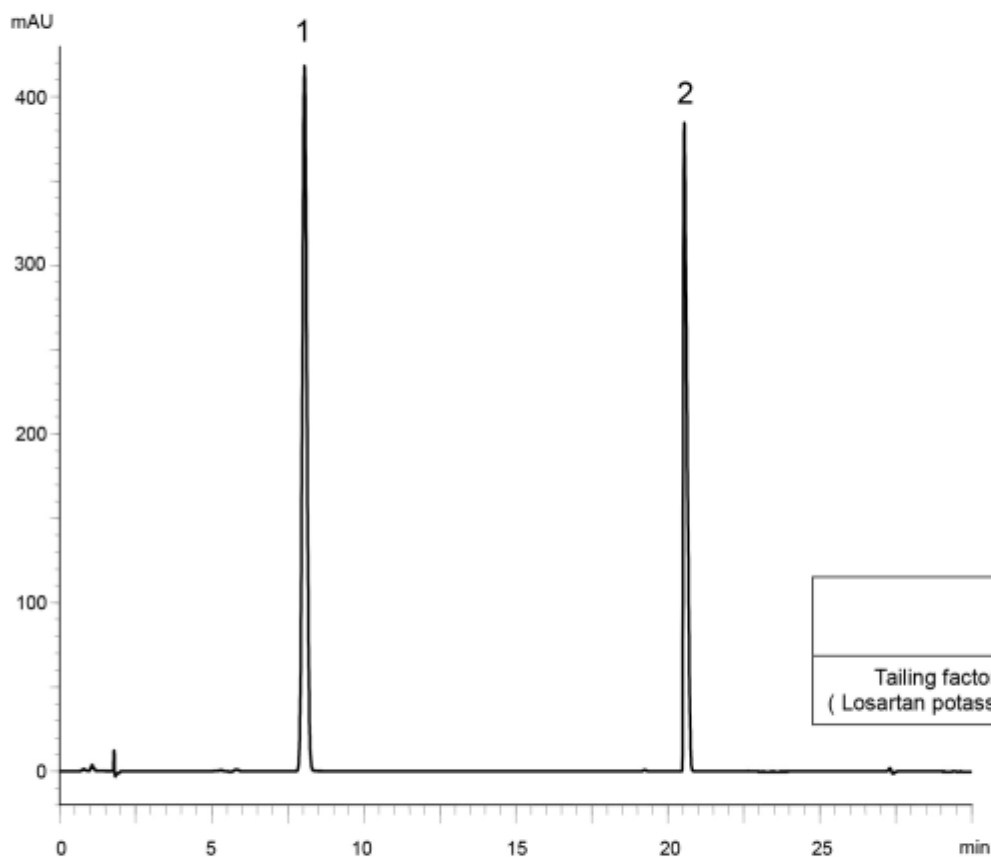


Hydrochlorothiazide

2



Losartan potassium



	System suitability requirement	Result
Tailing factor (Losartan potassium)	≤ 2.5	2.28

Column : YMC-Triart C8 (5 μm, 12 nm)
150 X 4.0 mm I.D.

Eluent : A) phosphate buffer (pH 6.7)^{*2}/acetonitrile (93/7)
B) acetonitrile
0-8%B (0-12 min), 8-62%B (12-28 min)

^{*2} Dissolve 1.25 g of KH₂PO₄ and 2.01 g of Na₂HPO₄ · 12H₂O in 1000 mL of water