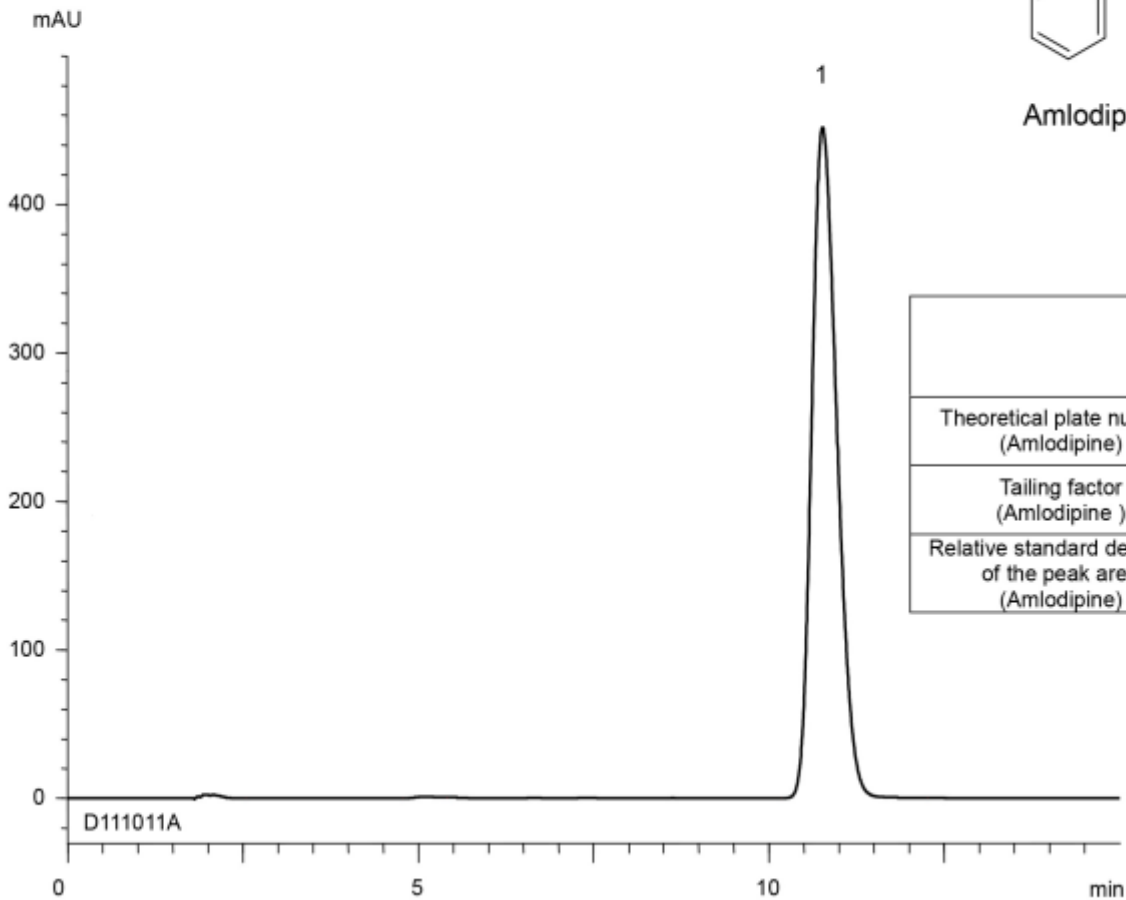


Amlodipine besilate



	System suitability requirement	result
Theoretical plate number (Amlodipine)	≥ 3000	4200
Tailing factor (Amlodipine)	≤ 2.0	1.26
Relative standard deviation of the peak area (Amlodipine)	$\leq 1.0\%$	0.12%

Column : YMC-Triart C18 (5 μm , 12 nm)
 150 X 4.6 mm I.D.
 Eluent : phosphate buffer (pH 6.0)*/methanol (40/60)
**Dissolve 4.1 g of KH_2PO_4 in 1000 mL of water and adjust pH 6.0 with 30 mM Na_2HPO_4*
 Flow rate : 0.8 mL/min (adjust the flow rate so that the retention time of amlodipine is about 10 min)
 Temperature : 25°C
 Detection : UV at 237 nm
 Injection : 30 μL (0.14 mg/mL)
 (The draft for the Japanese Pharmacopoeia; Assay)