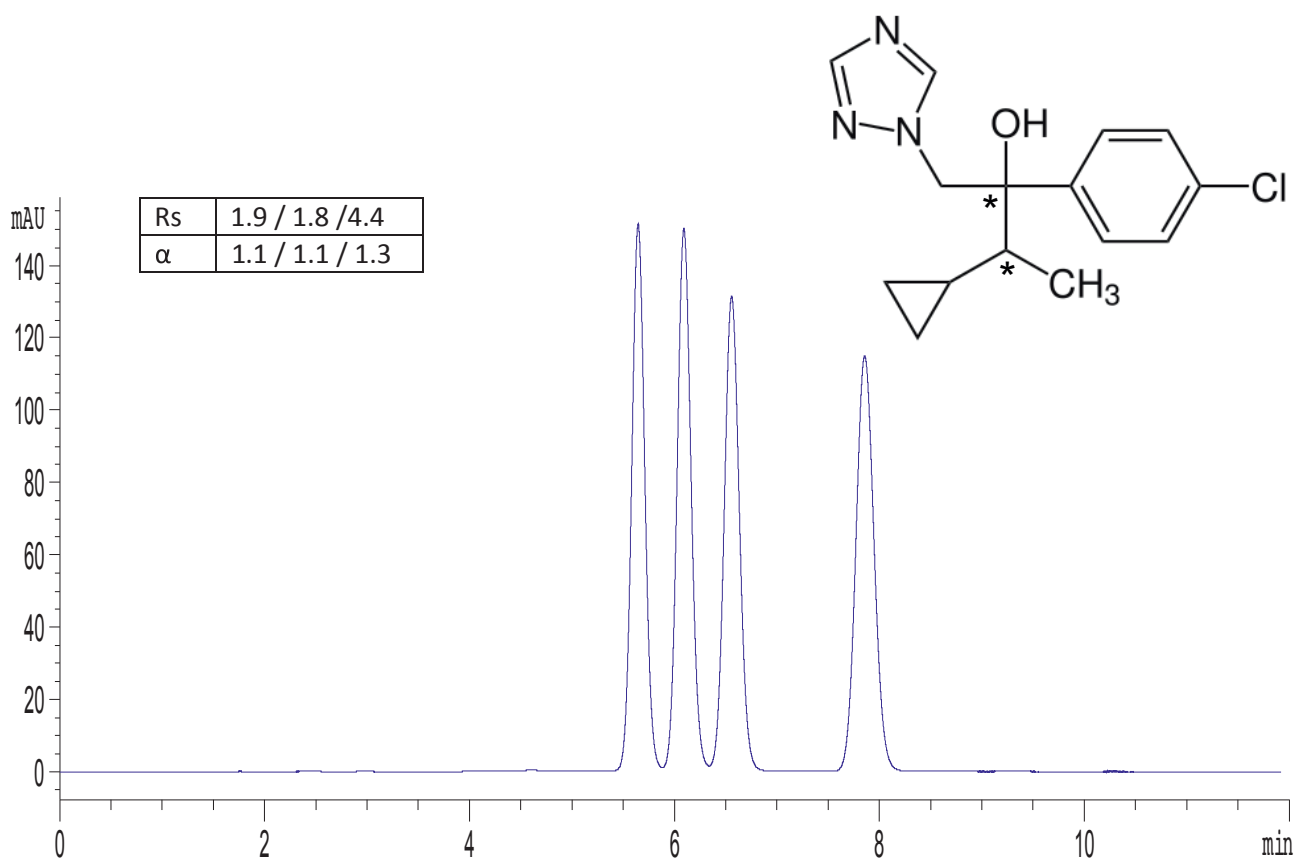


Application Note

Cyproconazole



Column: CHIRAL ART Cellulose-SC (5 μ m) 250 x 4.6 mm ID
Part No.: KSC99S05-2546WT
Eluent: water / acetonitrile (48/52)
Flow rate: 1.2 mL/min
Temperature: 25 $^{\circ}$ C
Detection: UV at 220 nm
Injection: 10 μ L (1 mg/mL)