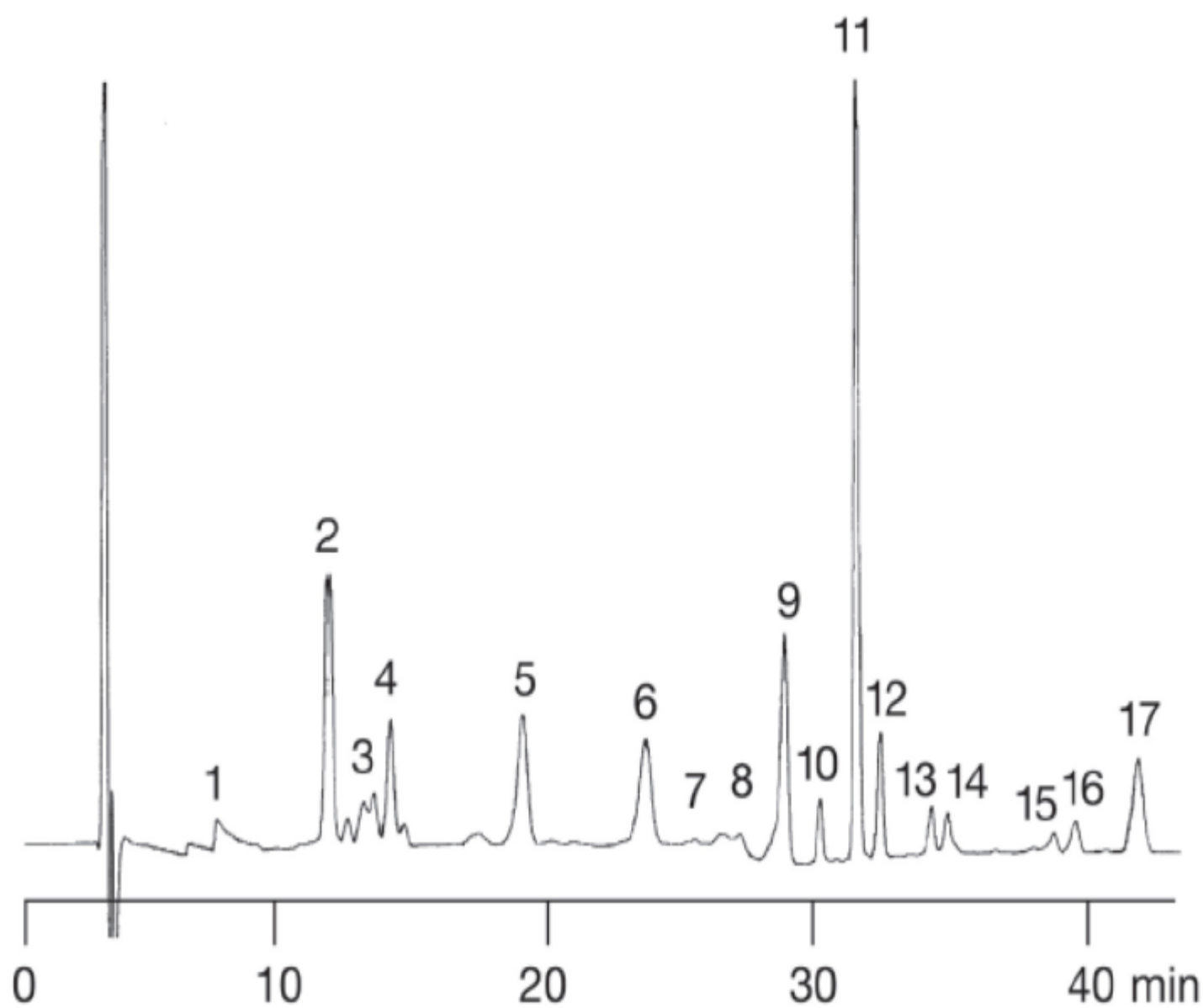


## Carotenoid pigments in algae<sub>b</sub>



1: Chlorophyll $c_1+c_2$	7: Zeaxanthin	13: $\beta$ -Cryptoxanthin
2: Fucoxanthin	8: Diatoxanthin	14: Echinenone
3: Neoxanthin	9: Chlorophyll $b_x$	15: Phaephorbid b
4: Violaxanthin	10: Chlorophyll $b_y$	16: $\alpha$ -Carotene
5: Diadinoxanthin	11: Chlorophyll $a_x$	17: $\beta$ -Carotene
6: Lutein	12: Chlorophyll $a_y$	

Column: YMC30 (5  $\mu$ m) 250 x 4.6 mm ID

Part No.: CT99S05-2546WT

Eluent: A: methanol / acetone = 60/40

B: acetone / H<sub>2</sub>O = 60/40

Gradient: 60-30% B (0-3 min), 30% B (3-22 min), 30-10% B (22-26 min),  
10% B (26-41.5 min), 10-60% B (41.5-45 min)

Flow: 0.5 ml/min

Detection: UV at 450 nm