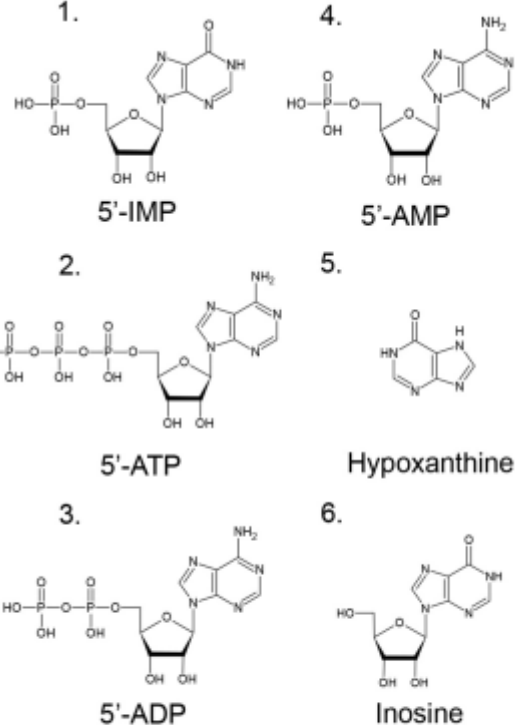
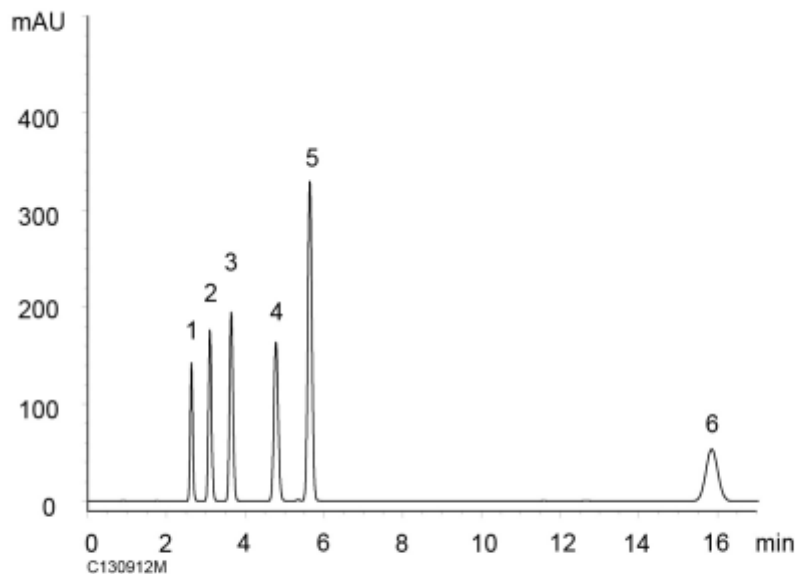
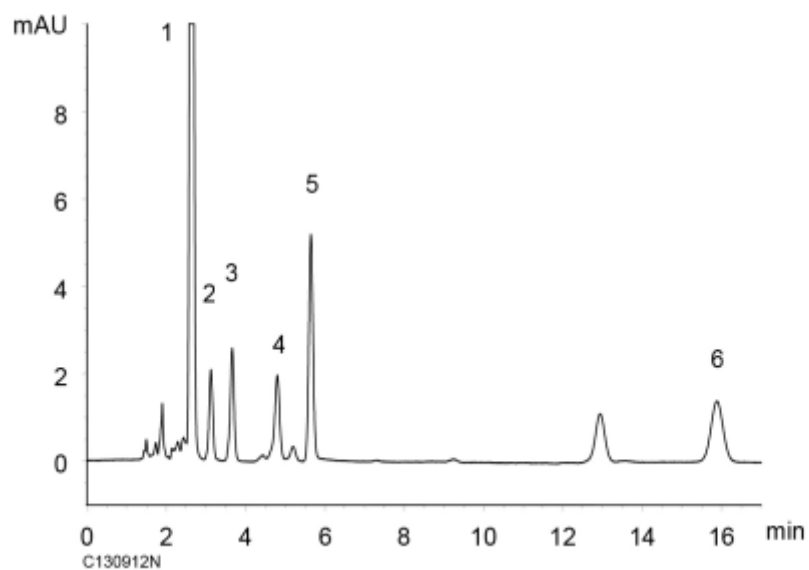


(A) Standard (0.05 mg/mL)



(B) Tuna meat



Sample preparation procedure

1 g of Tuna meat
↓ ← 1 M HClO₄ 5 mL
Homogenized
↓
Centrifuged (3000 rpm, 5 min)
↓
Supernatant
↓
Adjusted pH to 7.0 with 1 M NaHCO₃
↓
Diluted to 100 mL with eluent
↓
Filtered

Column : YMC-Triart C18 (5 μm, 12 nm)
150 X 3.0 mm I.D.

Eluent : 50 mM KH₂PO₄-K₂HPO₄ (pH 6.8)

Flow rate : 0.425 mL/min

Temperature : 40°C

Detection : UV at 260 nm

Injection : 6 μL