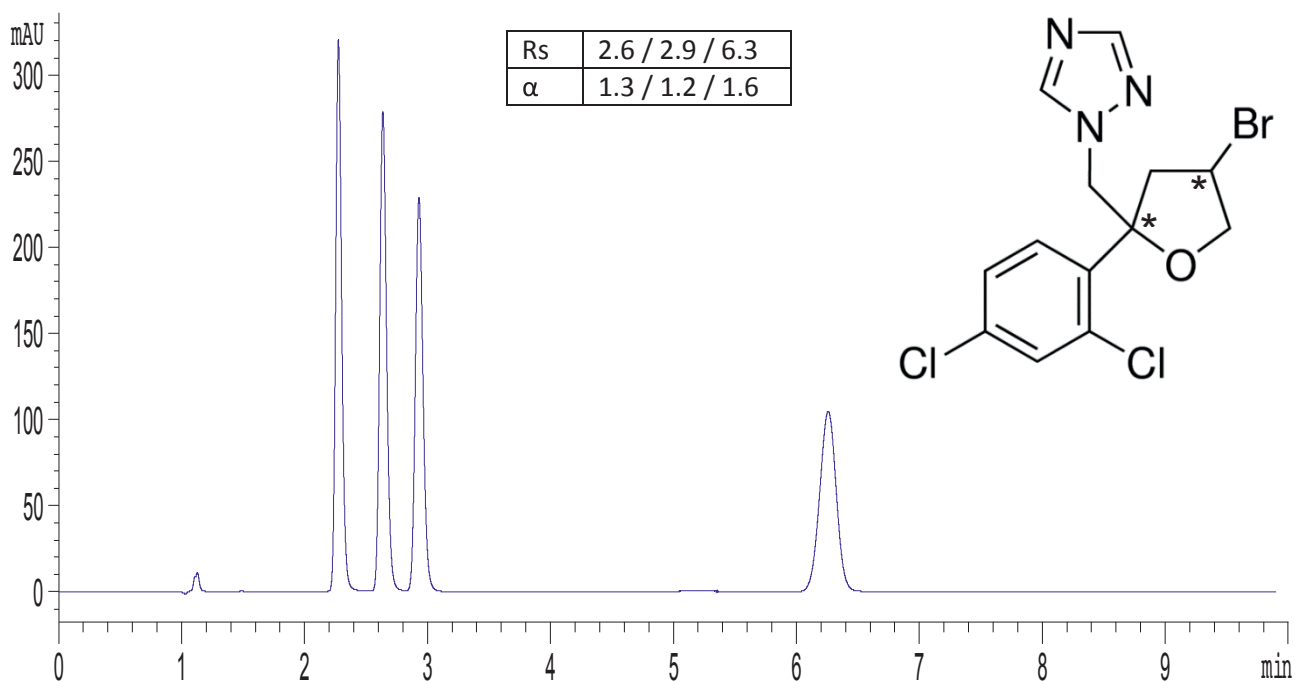


Application Note



Bromuconazole



Column: CHIRAL ART Cellulose-SC (3 μm) 150 x 3.0 mm ID
Part No: KSC99S03-1503WT
Eluent: *n*-hexane / ethanol (75/25)
Flow rate: 0.8 mL/min
Temperature: 35 °C
Detection: UV at 220 nm
Injection: 5 μL (1 mg/mL)