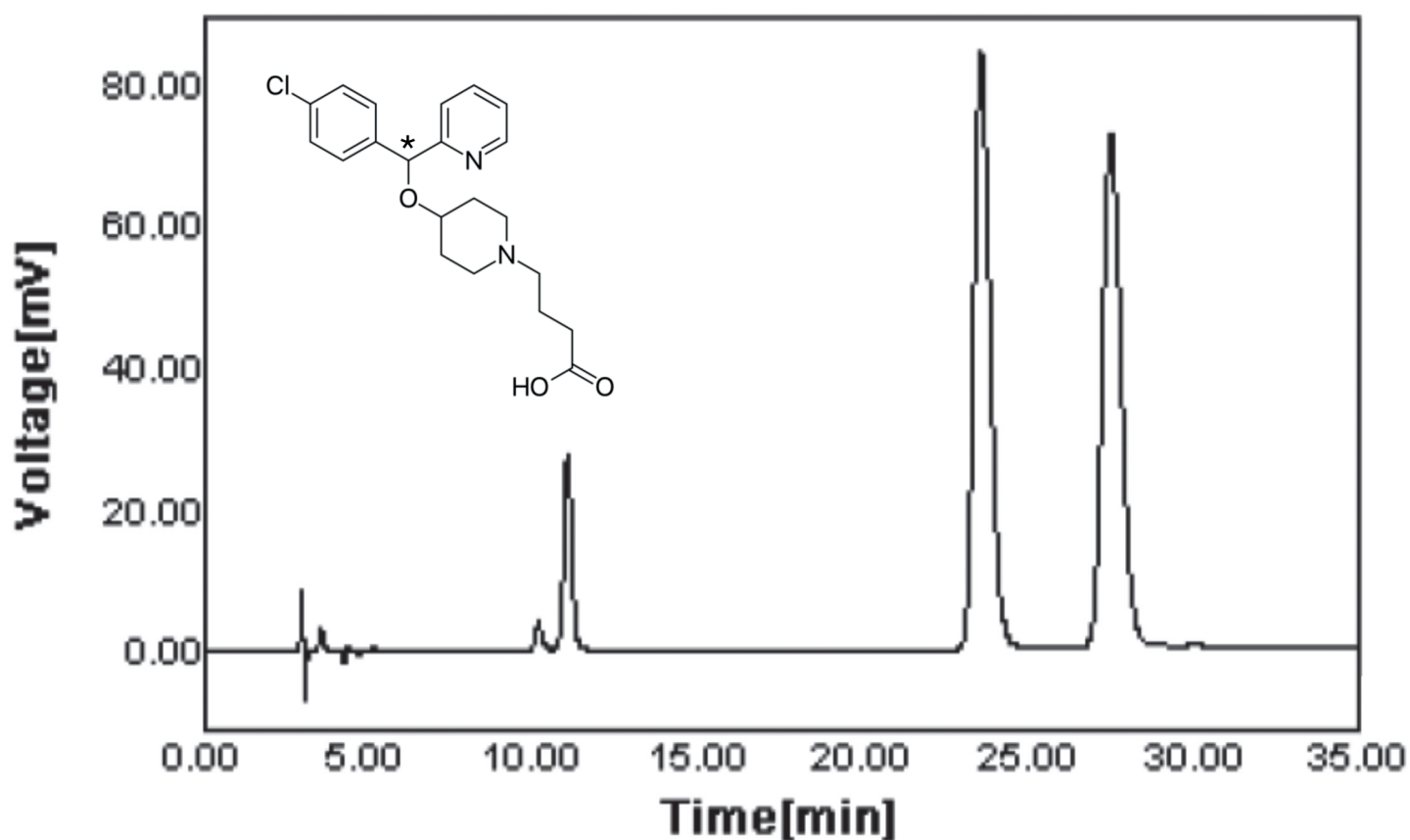


Application Note

Bepotastine**



Column: CHIRAL ART Amylose-SA 5 μ m (250 x 4.6 mm ID)
Part No.: KSA99S05-2546WT
Eluent: *n*-hexane/ethanol/1,4-dioxane/trifluoroacetic acid/diethylamine (90/5/5/0.1/0.1)
Flow rate: 1.0 mL/min
Temperature: 25°C
Detection: UV at 260 nm
Injection: 20 μ L (0.5 mg/mL)