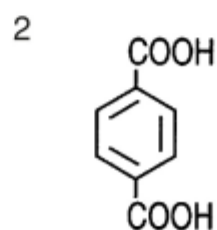
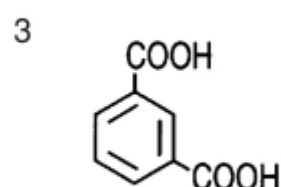


Phthalic acid



Terephthalic acid



Isophthalic acid

Column	: YMC-Pack ODS-AQ (5 $\mu$ m, 12nm) 150 $\times$ 4.6 mm I.D.
Eluent	: methanol/10mM H <sub>3</sub> PO <sub>4</sub> (25/75)
Flow rate	: 0.4 mL/min
Temperature	: 37 $^{\circ}$ C
Detection	: UV at 254 nm, 0.16 AUFS
Injection	: 10 $\mu$ L (0.05~0.5 mg/mL)