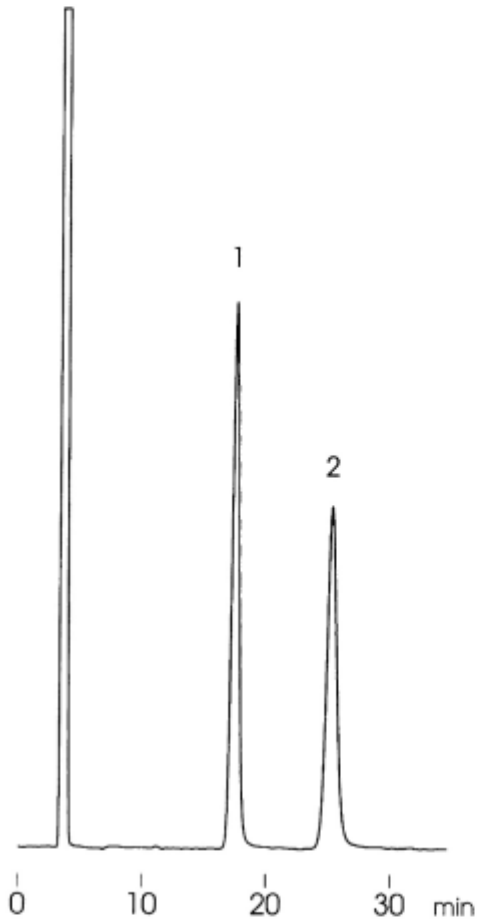


1. $\text{Fruf}\beta 2 \rightarrow 1\text{Fruf}\beta 2 \rightarrow 1\alpha \text{Glc}$ (1-Kestose)
2. $\text{Fruf}\beta 2 \rightarrow [1\text{Fruf}\beta 2]_2 \rightarrow 1\alpha \text{Glc}$ (Nystose)



Column : YMC-Pack NH₂ (5 μm , 12nm)
250 \times 4.6 mm I.D.
Eluent : acetonitrile/water (70/30)
Flow rate : 1.0 mL/min
Temperature : ambient (27 $^{\circ}\text{C}$)
Detection : RI, 32×10^{-6} RIU/FS
Injection : 20 μL (4.0 mg/mL)