

1 CH(OH)COOH



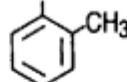
Mandelic acid

2 CONHCH<sub>2</sub>COOH



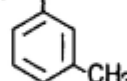
Hippuric acid

3 CONHCH<sub>2</sub>COOH



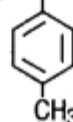
*o*-Methylhippuric acid

4 CONHCH<sub>2</sub>COOH



*m*-Methylhippuric acid

5 CONHCH<sub>2</sub>COOH



*p*-Methylhippuric acid

Column : J'sphere ODS-M80 (4 μm, 8nm)  
150 × 4.6 mm I.D.  
Eluent : 20mM NH<sub>4</sub>H<sub>2</sub>PO<sub>4</sub> - H<sub>3</sub>PO<sub>4</sub> (pH 3.2)/methanol (80/20)  
Flow rate : 1.0 mL/min  
Temperature : 37 °C  
Detection : UV at 225 nm, 0.16 AUFS  
Injection : 10 μL (0.04~0.07 mg/mL)