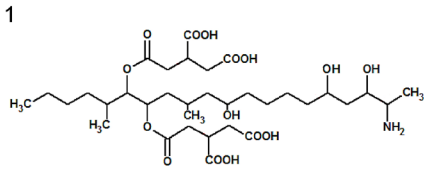
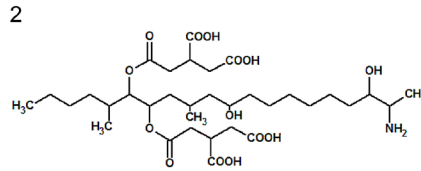


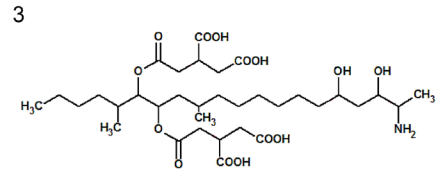
Simultaneous LC/MS/MS Analytics of Fumonisin (B1, B2, B3)



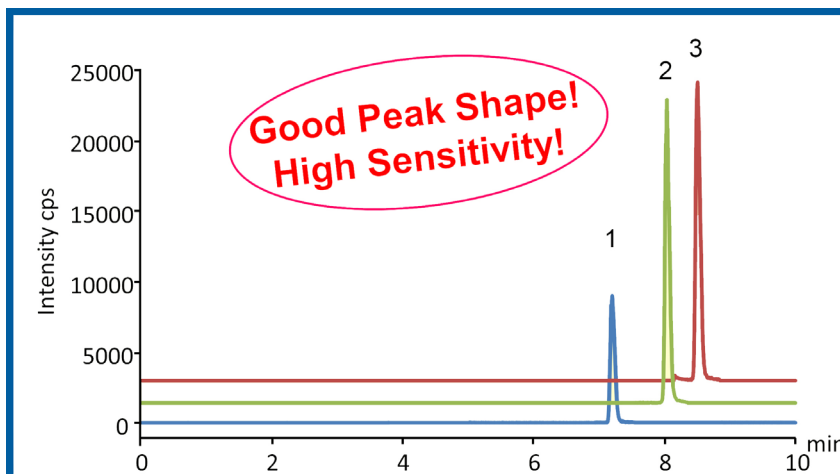
Fumonisin B1 (Q1/Q3 : 722/334)



Fumonisin B3 (Q1/Q3 : 706/336)

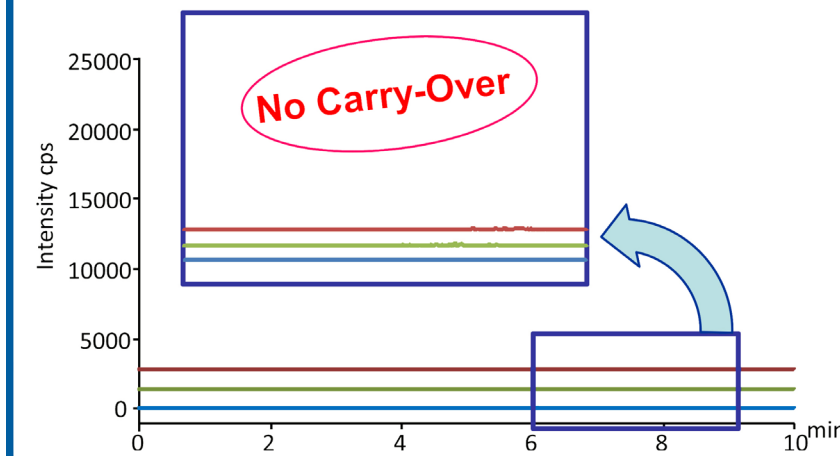


Fumonisin B2 (Q1/Q3 : 706/336)



- direct measurement
- rapid results
- real samples

Blank run after the analysis of fumonisins standard



Column: YMC-Triart C18 (3 μ m, 12 nm) 150 x 2.1 mm ID
 Part No.: TA12S03-15Q1PTP
 Eluent: A) water/HCOOH (100/0.1) B) acetonitrile
 25-50% B (0-5 min), 50% B (5-8 min), 50-90% B (8-10 min)
 Flow rate: 0.2 ml/min
 Temperature: 40 $^{\circ}$ C
 Detection: ESI, positive, Scheduled MRM (Metal free column), MRM (Standard column)
 Injection: 5 μ L (0.1 mg/mL)
 Instrument: LC) Shimadzu Prominence UFLC, MS) AB Sciex 3200 QTRAP